

PRODUCT

# DATA SHEET



Bending  
Cutting  
Welding  
Marking

2025-2026

HIGHTECH INDUSTRY GROUP

BUILD . TO LEAD .

# HTPRO

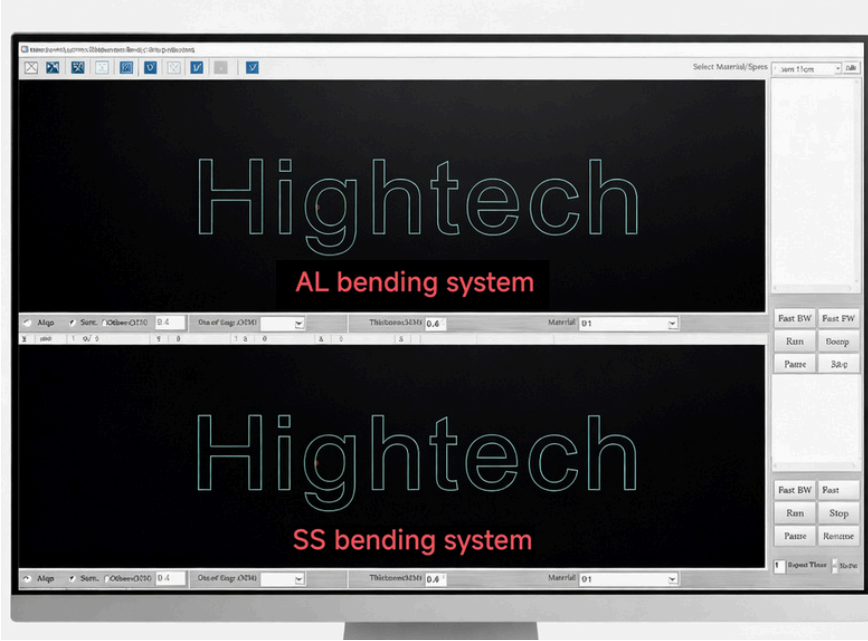
## CHANNEL LETTER BENDING MACHINE



**High Automation & Efficiency**  
Fully automated feeding, slotting, bending, and cutting, completing channel letter returns and outside bends with one click, saving time and labor.

**Precision & Material Compatibility**  
Ensures accurate bends matching CNC-cut faces and backs; works with stainless steel, aluminum, and profile materials.

**Cost & Energy Savings**  
Replaces 10–20 manual workers, lowers labor costs, and features an energy-efficient design for cost-effective production.



## SOFTWARE

DEVELOPED IN-HOUSE FOR CONTINUOUS IMPROVEMENT.

MULTI-POINT GROOVING, CONTOUR OFFSET, GLUE WEIGHT & AREA CALCULATION, TOOL RADIUS COMPENSATION, MATERIAL MEMORY, AND ONE-CLICK MATERIAL CHANGE.

DESIGNED FOR EFFICIENCY AND PRECISION.

## DRIVER

HIGH-POWER SERVO SYSTEM CONTROL WITH HIGH PRECISION, FAST SPEED, AND STRONG TORQUE, IMPROVING LETTERING EFFICIENCY.

FEATURES PROPRIETARY SOFTWARE AND DRIVERS FOR ABSOLUTE CONTROL OVER FEEDING, CUTTING, AND BENDING.



# PARTS



## MOTORS

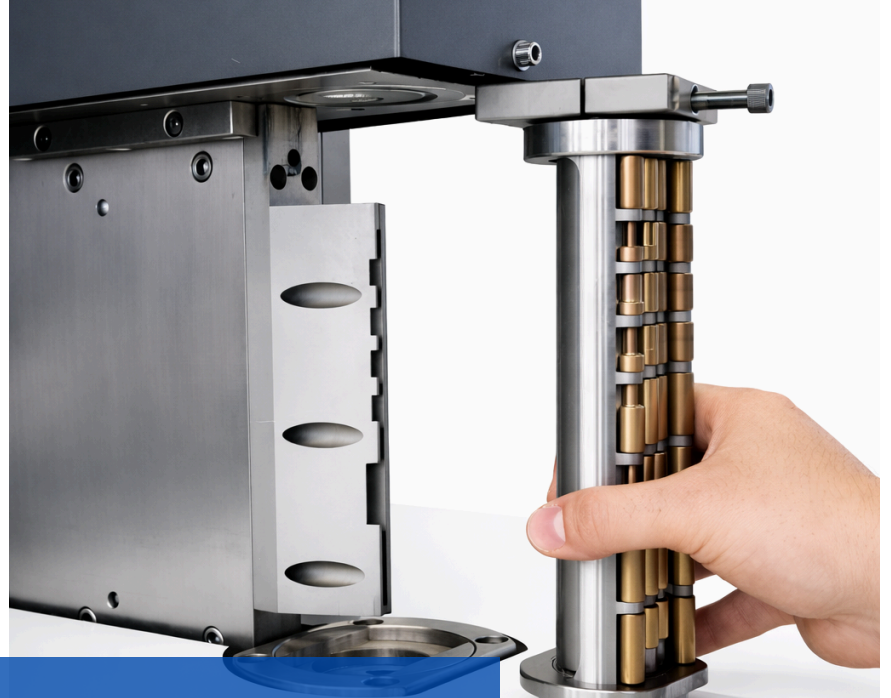
THE HT PRO BENDING MACHINE'S MOTOR PROVIDES CONSISTENT, STRONG POWER FOR FEEDING, CUTTING, AND BENDING, ENSURING SMOOTH OPERATION UNDER HEAVY WORKLOADS AND IMPROVING PRODUCTIVITY.

THE MOTOR WORKS WITH THE CNC SYSTEM FOR ACCURATE BENDING AND FEEDING, DELIVERING PRECISE RESULTS WHILE REDUCING ENERGY USE AND LOWERING OPERATING COSTS.

## BENDING SYSTEM

FEATURES A PATENTED DUAL-SYSTEM ARC BENDING UNIT, WITH SEPARATE SYSTEMS OPTIMIZED FOR STAINLESS STEEL AND ALUMINUM.

THE LIFTING AND ADD-ON EXTRUSION BENDING MECHANISMS CAN BE SWITCHED ACCORDING TO THE MATERIAL, ENABLING TRUE MULTI-MATERIAL PROCESSING WITH GREATLY IMPROVED EFFICIENCY.



# PARTS



## FEEDING SYSTEM

INDEPENDENT FEEDING RACK WITH HIGHER LOAD CAPACITY, EQUIPPED WITH A MATERIAL LEVELING DEVICE FOR SMOOTHER AND MORE STABLE FEEDING.

DUAL-ROW ROLLER FEEDING WITH REINFORCED ROLLERS, OFFERING FASTER SPEED AND BETTER STABILITY; ENCODER-CONTROLLED ACCURACY UP TO  $\leq 0.1$  MM.

SOFTWARE-CONTROLLED UNLOADING SYSTEM PREVENTS SLIPPING AND DEFORMATION, ENSURING HIGH PRECISION.

## STEEL CUTTER

STAINLESS STEEL CUTTING SYSTEM  
IMPORTED CARBIDE PLANER BLADE WITH  
AUTOMATIC TOOL ALIGNMENT, REINFORCED  
2.5 MM LEAD SCREW, AND SERVO DRIVE FOR  
FAST, STABLE, AND PRECISE CUTTING.





## ALUMINUM CUTTER

75MM BLADE DIAMETER WITH 10 CUTTING HEADS, 2.0 SQUARE GUIDE RAIL FOR ENHANCED STABILITY DURING OPERATION

AUTO-ANGLE RECOGNITION WITH FRONT/BACK OSCILLATING MOTION, MOTORIZED HEIGHT ADJUSTMENT, AND AUTOMATIC DEPTH CONTROL VIA SOFTWARE

REINFORCED 4-COLUMN STRUCTURE FOR STEADY, HIGH-QUALITY CUTS

## OIL-WATER SEPARATOR

THE OIL-WATER SEPARATOR EFFECTIVELY REMOVES MOISTURE AND OIL FROM COMPRESSED AIR, ENSURING A CLEAN AND STABLE AIR SUPPLY FOR THE BENDING MACHINE.

THIS HELPS PROTECT PNEUMATIC COMPONENTS, REDUCES WEAR AND CORROSION, AND IMPROVES OVERALL MACHINE RELIABILITY AND SERVICE LIFE.



# PARTS



## ENCODER

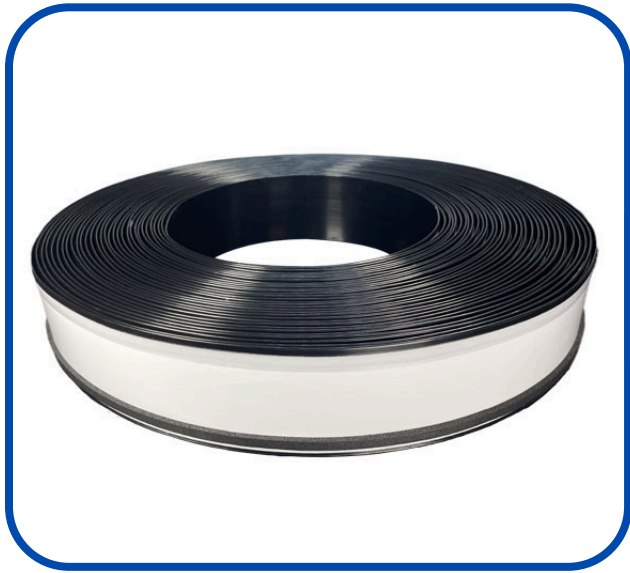
THE ENCODERS FEATURE A DURABLE MECHANICAL STRUCTURE DESIGNED. HIGH-RESOLUTION OPTIONS WITH STABLE PULSE OUTPUT AND STRONG ANTI-INTERFERENCE CAPABILITY.

THEY PROVIDE PRECISE SPEED, POSITION, AND DIRECTION FEEDBACK, SUITABLE FOR SERVO SYSTEMS.

THEY SUPPORT MULTIPLE VOLTAGE LEVELS AND OUTPUT SIGNALS (SUCH AS TTL, HTL, AND LINE DRIVER)

# Technical Parameters

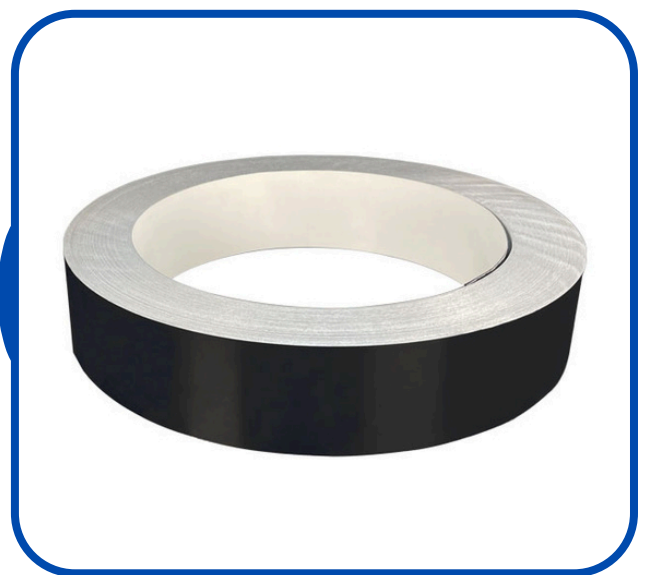
<b>Slotting System</b>	Milling cutter & Planner knife
<b>Bending System</b>	Double rod linkage bending method& Double alternate blade
<b>Feeding System</b>	Rolling feeding device
<b>Working Voltage</b>	Single Phase AC 220V,50/60Hz
<b>Cutting Depth Calibration</b>	Automatic by software
<b>Size Accuracy</b>	±0.1mm
<b>Material Height</b>	30~160mm
<b>Material Thickness</b>	0.3 ~1.2mm
<b>Minimum Bending Radius</b>	R≥10mm (AL), R≥6mm (SS)
<b>Input File Format</b>	*.AI
<b>Assembled Dimensions</b>	2.55*0.85m*1.71m
<b>Packing Size</b>	166*80*177cm (2.4m <sup>3</sup> )
<b>Packing Weight</b>	580KG
<b>Applicable material</b>	Flat aluminum / Letterume (LET-R-Edge) /Fold edge aluminum/ Extrusion aluminum profile/ Stainless Steel/Galvanized plate/Iron



## LETTERUME (LET-R-EDGE STYLE COIL)

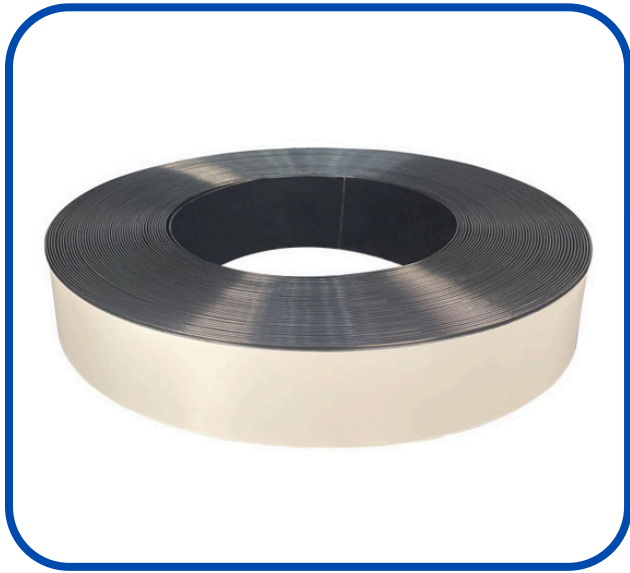
CHANNEL LETTER WITH SPONGE AND PVC  
AVAILABLE PROCESSING SIZES: 5CM/7CM/9CM/11CM

## APPLICABLE MATERIAL



## FLAT ALUMINUM COILS

AVAILABLE PROCESSING SIZES: 3CM UP TO 16CM



## SINGLE EDGE COILS

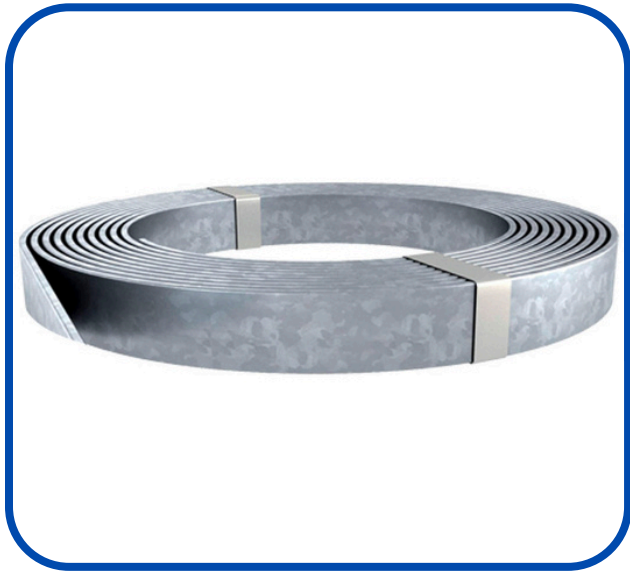
AVAILABLE PROCESSING SIZES: 6CM UP TO 12CM

## APPLICABLE MATERIAL



## TRIMLESS PROFILE

AVAILABLE PROCESSING SIZES: 5/8/10 CM



## GALVANIZED STRIPS

AVAILABLE PROCESSING SIZES: 3CM UP TO 16CM

# APPLICABLE MATERIAL



## STAINLESS STEEL

AVAILABLE PROCESSING SIZES: 3CM UP TO 16CM

# ABOUT US

BUILD . TO LEAD .



Based in Weifang, Shandong, our modern manufacturing base covers over 12,000 m<sup>2</sup> and integrates research, development, production, and testing in one facility — ensuring stability, efficiency, and quality at every stage.

Hightech provides professional installation, training, and lifetime technical support. Our responsive service team and spare-parts centers ensure fast solutions and long-term reliability for every customer.



Equipped with advanced CNC machining centers, laser cutting systems, precision welding equipment, and intelligent assembly lines, Hightech continuously upgrades its technology to meet global industrial standards.

Driven by passion and professionalism, our international team of engineers, designers, and sales specialists works together to deliver innovative machines and trusted partnerships worldwide under the Hightech brand.





# CONTACT US



 USA, Hightech Industry INC USA

 Canada, Hightech Industry Canada


 United Kingdom, Hightech Signage Solutions LTD

 Mexico, Hightech Industry operated by Imprime iya

 Iran, Hightech Industry operated by Aluone

 Brazil, Hightech Industry operated by Banner Jet

 India, Mehta Hightech Industries L.L.P

 IRAQ, BAGHDAD, Hightech Industry operated by AL Sabagh

 Dubai, Hightech Blue LLC

 Indonesia, Hightech operated by PT Digital Prima Imaging



 NO. 6188 WEICHANG ROAD, WEICHENG DISTRICT, WEIFANG CITY, SHANDONG PROVINCE, CHINA

 [INFO@HTINDUSTRYCO.COM](mailto:INFO@HTINDUSTRYCO.COM)



[WWW.HTINDUSTRYCO.COM](http://WWW.HTINDUSTRYCO.COM)



+86 156 2166 0575 / +86 156 2166 0576