

PRODUCT

# DATA SHEET



Bending  
Cutting  
Welding  
Marking

2025-2026

HIGHTECH INDUSTRY GROUP

BUILD . TO LEAD .

# HTZ5

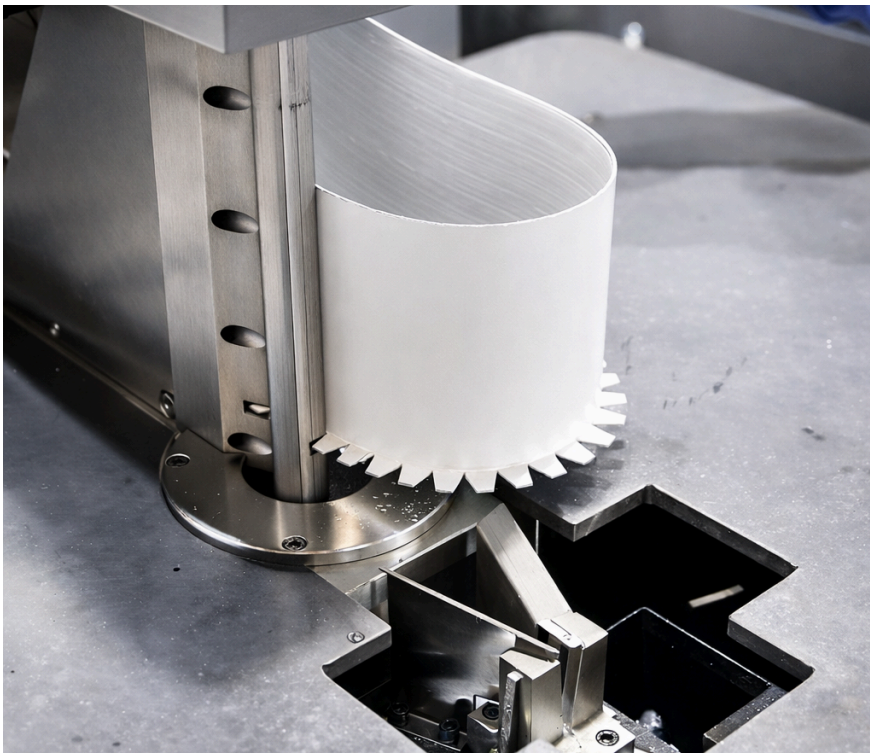
## CHANNEL LETTER BENDING MACHINE



**High Precision and Smooth Operation**  
Features advanced servo motion control, high-precision ball screws, and linear guide rails, ensuring smooth feeding and precise bending and slotting.

**Efficient Automated Production**  
Double-blade alternating bending and automated feeding enable fast, stable, and fully automated operation, significantly improving production efficiency for professional signage manufacturing.

**Wide Material Compatibility**  
Supports aluminum, galvanized steel, and stainless steel. Aluminum processing includes cutting teeth for easier backing plate fixing.



## BENDING SYSTEM

OUR DOUBLE-BLADE ALTERNATING BENDING COMBINED WITH AUTOMATED FEEDING ALLOWS FOR FAST, STABLE, AND FULLY AUTOMATED OPERATION. THIS SETUP MAKES HANDLING EACH PROJECT SMOOTH AND EFFORTLESS, SAVING TIME AND REDUCING MANUAL EFFORT.

DESIGNED SPECIFICALLY FOR PROFESSIONAL SIGNAGE MANUFACTURING, THIS SYSTEM SIGNIFICANTLY BOOSTS PRODUCTION EFFICIENCY. IT HELPS YOU COMPLETE MORE WORK IN LESS TIME WHILE MAINTAINING CONSISTENT, HIGH-QUALITY RESULTS.

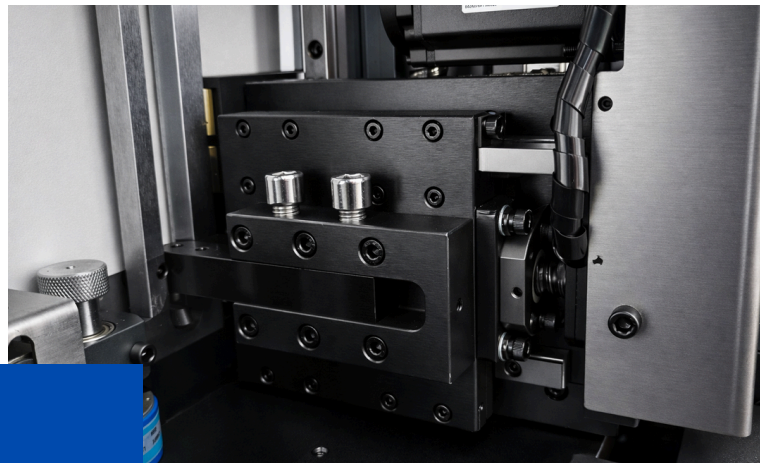
# PARTS

## FEEDING SYSTEM

CIRCULATION CLAMP FEEDING SYSTEM,ENSURES ACCURATE STRIP FEEDING WITH  $\pm 0.01\text{MM}$  TOLERANCE.

STABLE OPERATION WITHOUT SLIPPING OR DISTORTION.

DESIGNED FOR LONG-TERM PERFORMANCE AND DURABILITY.



## CUTTING SYSTEM

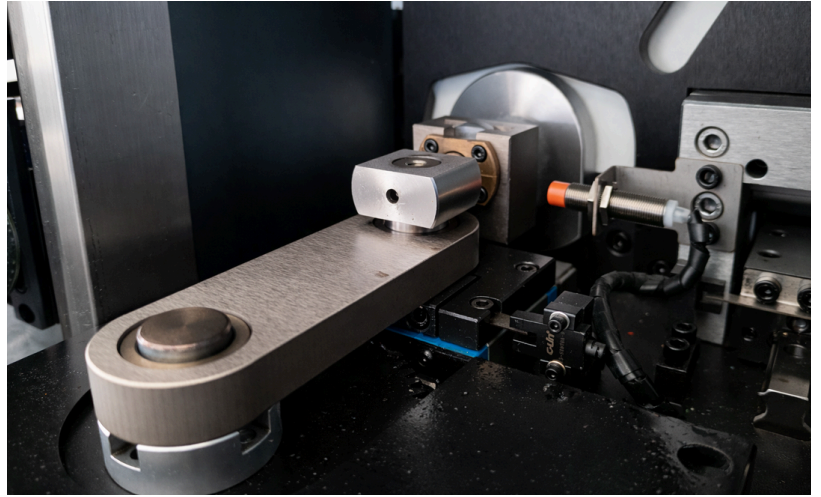
STAINLESS STEEL CUTTING

IMPORTED CARBIDE PLANER BLADE WITH AUTOMATIC TOOL ALIGNMENT, REINFORCED 2.5 MM LEAD SCREW, AND SERVO DRIVE FOR FAST, STABLE, AND PRECISE CUTTING.

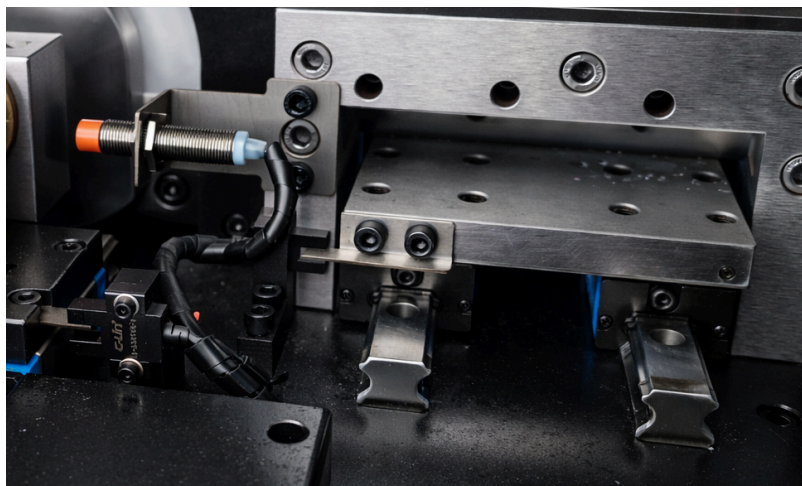
## NOTCHING SYSTEM

THE SERVO MOTOR-CONTROLLED V-CUT SYSTEM USES SMOOTH CUTTING TEETH WITH 30° AND 120° ANGLES, DELIVERING HIGH EFFICIENCY, ACCURACY, AND STABLE PERFORMANCE.

IT OPERATES QUIETLY WITHOUT POLLUTION, MAKING IT AN ENVIRONMENTALLY FRIENDLY SOLUTION.



# PARTS



## FLANGING SYSTEM

THE AUTOMATIC FLANGING SYSTEM WITH A PNEUMATIC ANGLE EDGE IS FLEXIBLE AND EASY TO OPERATE, WORKING SEAMLESSLY WITH THE 3D CHANNEL LETTER CLINCHER.

THIS COMBINATION ENSURES A STRONGER AND MORE SECURE BACKING PLATE INSTALLATION, IMPROVING OVERALL STABILITY AND RELIABILITY.

## SCISSORING SYSTEM

THE AUTOMATIC SCISSORING SYSTEM IS EFFICIENT AND EASY TO USE, SUITABLE FOR BOTH ALUMINUM AND STAINLESS STEEL MATERIALS, AND ENSURES CLEAN, PRECISE CUTTING.

WHEN ENABLED, IT AUTOMATICALLY CUTS EACH CHANNEL LETTER AFTER COMPLETION, REDUCING MANUAL WORK AND SAVING BOTH TIME AND LABOR COSTS.

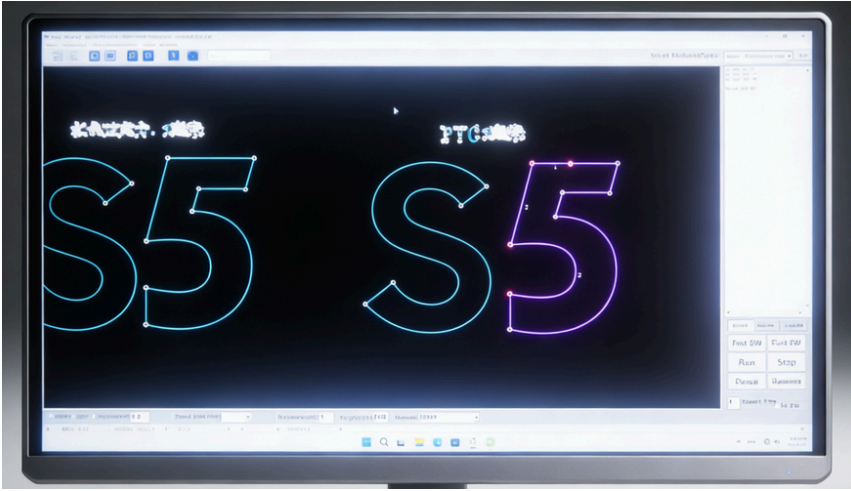


# SOFTWARE

DEVELOPED IN-HOUSE FOR CONTINUOUS IMPROVEMENT.

MULTI-POINT GROOVING, CONTOUR OFFSET, GLUE WEIGHT & AREA CALCULATION, TOOL RADIUS COMPENSATION, MATERIAL MEMORY, AND ONE-CLICK MATERIAL CHANGE.

DESIGNED FOR EFFICIENCY AND PRECISION.



# DRIVER

HIGH-POWER SERVO SYSTEM CONTROL WITH HIGH PRECISION, FAST SPEED, AND STRONG TORQUE, IMPROVING LETTERING EFFICIENCY.

FEATURES PROPRIETARY SOFTWARE AND DRIVERS FOR ABSOLUTE CONTROL OVER FEEDING, CUTTING, AND BENDING.



# PARTS

## CYLINDER

THE CHANNEL LETTER BENDING MACHINE IS EQUIPPED WITH DEDICATED FLANGE, V-NOTCH, AND SCISSORING CYLINDERS TO HANDLE ALL KEY FORMING OPERATIONS WITH PRECISION AND RELIABILITY.

THE FLANGE CYLINDER CREATES CLEAN, STRONG EDGES FOR SECURE FACE ATTACHMENT, THE V-NOTCH CYLINDER ENSURES ACCURATE BENDING POINTS, AND THE SCISSORING CYLINDER AUTOMATICALLY CUTS THE FINISHED LETTER, IMPROVING EFFICIENCY AND REDUCING MANUAL WORK.



## MOTORS

THE BENDING MACHINE'S MOTOR PROVIDES CONSISTENT, STRONG POWER FOR FEEDING, CUTTING, AND BENDING, ENSURING SMOOTH OPERATION UNDER HEAVY WORKLOADS AND IMPROVING PRODUCTIVITY.

THE MOTOR WORKS WITH THE CNC SYSTEM FOR ACCURATE BENDING AND FEEDING, DELIVERING PRECISE RESULTS WHILE REDUCING ENERGY USE AND LOWERING OPERATING COSTS.



# PARTS



## ENCODER

THE ENCODERS FEATURE A DURABLE MECHANICAL STRUCTURE DESIGNED. HIGH-RESOLUTION OPTIONS WITH STABLE PULSE OUTPUT AND STRONG ANTI-INTERFERENCE CAPABILITY.

THEY PROVIDE PRECISE SPEED, POSITION, AND DIRECTION FEEDBACK, SUITABLE FOR SERVO SYSTEMS.

THEY SUPPORT MULTIPLE VOLTAGE LEVELS AND OUTPUT SIGNALS (SUCH AS TTL, HTL, AND LINE DRIVER)

## OIL-WATER SEPARATOR

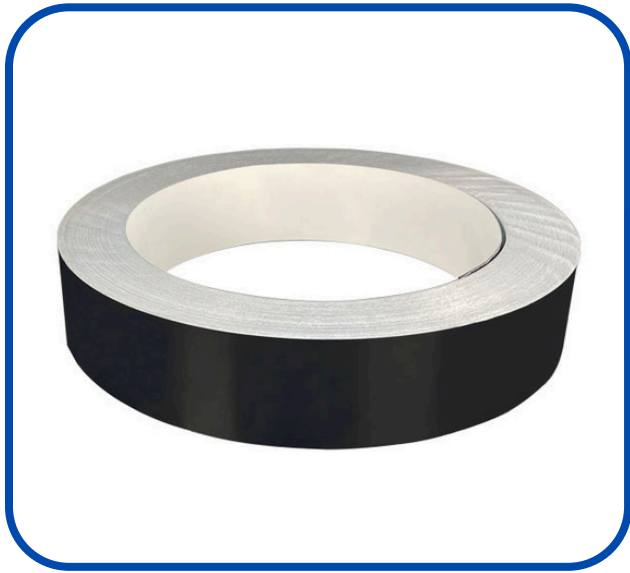
THE OIL-WATER SEPARATOR EFFECTIVELY REMOVES MOISTURE AND OIL FROM COMPRESSED AIR, ENSURING A CLEAN AND STABLE AIR SUPPLY FOR THE BENDING MACHINE.

THIS HELPS PROTECT PNEUMATIC COMPONENTS, REDUCES WEAR AND CORROSION, AND IMPROVES OVERALL MACHINE RELIABILITY AND SERVICE LIFE.



# Technical Parameters

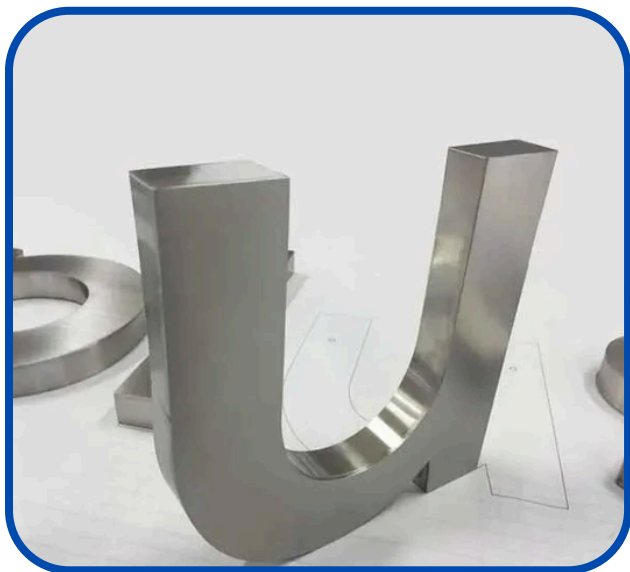
|                                  |                                             |
|----------------------------------|---------------------------------------------|
| <b>Slotting System</b>           | Servo planer slotting system                |
| <b>Bending System</b>            | Servo double blade altering bending         |
| <b>Feeding System</b>            | Circulation clamp feeding system            |
| <b>Working Voltage</b>           | Single Phase AC 220V,50/60Hz                |
| <b>Cutting Depth Calibration</b> | Automatic by software                       |
| <b>Size Accuracy</b>             | ±0.1mm                                      |
| <b>Material Height</b>           | 10-220mm                                    |
| <b>Material Thickness</b>        | 0.8-1.2mm                                   |
| <b>Minimum Bending Radius</b>    | R≥6mm                                       |
| <b>Input File Format</b>         | *.AI                                        |
| <b>Assembled Dimensions</b>      | 3.40*1.10*1.70m                             |
| <b>Packing Size</b>              | 226*100*192cm(4.3m <sup>3</sup> )           |
| <b>Packing Weight</b>            | 938KGS                                      |
| <b>Applicable material</b>       | Flat aluminum/Steel / Galvanized plate/Iron |



## FLAT ALUMINUM COILS

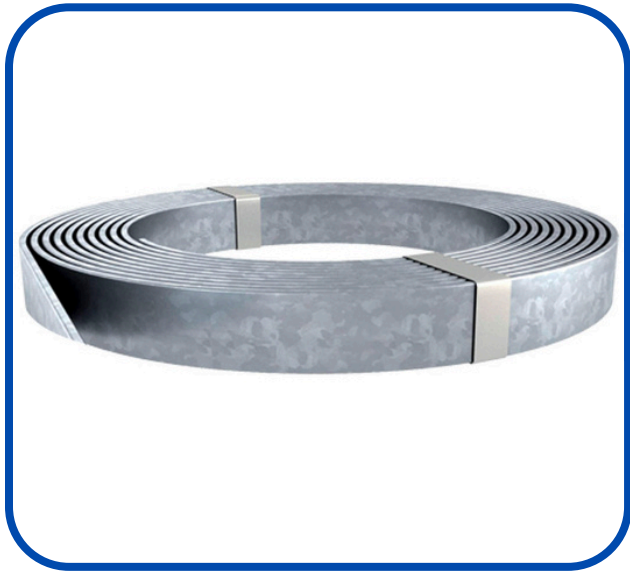
AVAILABLE PROCESSING SIZES: 1CM UP TO 22CM

# APPLICABLE MATERIAL



## STAINLESS STEEL

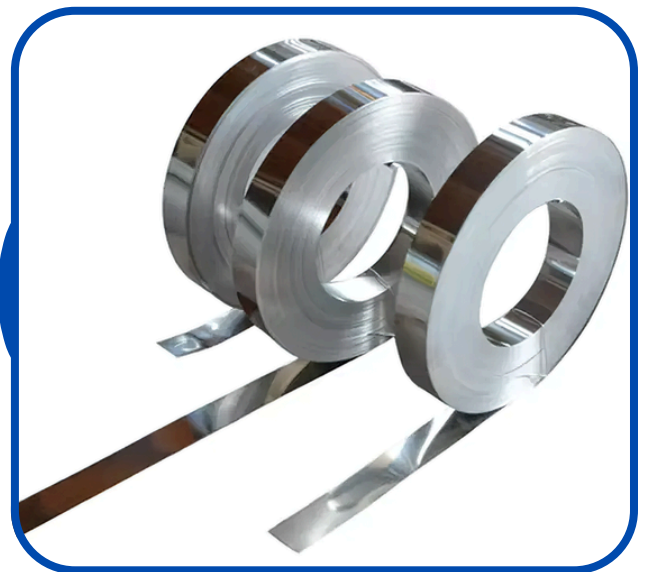
AVAILABLE PROCESSING SIZES: 1CM UP TO 22CM



## GALVANIZED STRIPS

AVAILABLE PROCESSING SIZES: 1CM UP TO 22CM

# APPLICABLE MATERIAL



## IRON STRIPS

AVAILABLE PROCESSING SIZES: 1CM UP TO 22CM

# ABOUT US

BUILD . TO LEAD .



Based in Weifang, Shandong, our modern manufacturing base covers over 12,000 m<sup>2</sup> and integrates research, development, production, and testing in one facility — ensuring stability, efficiency, and quality at every stage.

Hightech provides professional installation, training, and lifetime technical support. Our responsive service team and spare-parts centers ensure fast solutions and long-term reliability for every customer.



Equipped with advanced CNC machining centers, laser cutting systems, precision welding equipment, and intelligent assembly lines, Hightech continuously upgrades its technology to meet global industrial standards.

Driven by passion and professionalism, our international team of engineers, designers, and sales specialists works together to deliver innovative machines and trusted partnerships worldwide under the Hightech brand.





# CONTACT US



 USA, Hightech Industry INC USA

 Canada, Hightech Industry Canada


 United Kingdom, Hightech Signage Solutions LTD

 Mexico, Hightech Industry operated by Imprime iya

 Iran, Hightech Industry operated by Aluone

 Brazil, Hightech Industry operated by Banner Jet

 India, Mehta Hightech Industries L.L.P

 IRAQ, BAGHDAD, Hightech Industry operated by AL Sabagh

 Dubai, Hightech Blue LLC

 Indonesia, Hightech operated by PT Digital Prima Imaging



 NO. 6188 WEICHANG ROAD, WEICHENG DISTRICT, WEIFANG CITY, SHANDONG PROVINCE, CHINA

 [INFO@HTINDUSTRYCO.COM](mailto:INFO@HTINDUSTRYCO.COM)



[WWW.HTINDUSTRYCO.COM](http://WWW.HTINDUSTRYCO.COM)



+86 156 2166 0575 / +86 156 2166 0576