

PRODUCT

# DATA SHEET



Bending  
Cutting  
Welding  
Marking

2025-2026

HIGHTECH INDUSTRY GROUP

BUILD . TO LEAD .

# HT3

## CHANNEL LETTER BENDING MACHINE



**Fully Automated High-Efficiency Production**  
Integrates automatic feeding, slotting, bending, and adjustable cutting depth into one computer-controlled process with one-click operation.

**Superior Precision and Quality**  
Advanced systems like the double-blade alternate bending and precise slotting ensure consistently accurate bends that align perfectly with CNC-cut faces and backs.

**Versatile Material Compatibility**  
The machine can process a variety of strip materials including stainless steel, flat aluminum, galvanized strips, and iron strips.

## SOFTWARE

DEVELOPED IN-HOUSE FOR CONTINUOUS IMPROVEMENT. THE BUILT-IN MATERIAL DATABASE STORES BENDING PARAMETERS FOR DIFFERENT MATERIALS AND SPECIFICATIONS, AUTOMATICALLY APPLYING OPTIMAL SETTINGS TO ENSURE ACCURATE, CONSISTENT BENDING WHILE REDUCING MANUAL ADJUSTMENT AND ERRORS. DESIGNED FOR EFFICIENCY AND PRECISION.



## DRIVER

A FULLY INTEGRATED BENDING SYSTEM

FEATURES PROPRIETARY SOFTWARE AND DRIVERS FOR ABSOLUTE CONTROL OVER FEEDING, CUTTING, AND BENDING.

UNLOCK SPECIALIZED FUNCTIONS LIKE MULTI-POINT GROOVING AND TOOL COMPENSATION.



# PARTS



## MOTORS

THE BENDING MACHINE'S MOTOR PROVIDES CONSISTENT, STRONG POWER FOR FEEDING, CUTTING, AND BENDING, ENSURING SMOOTH OPERATION UNDER HEAVY WORKLOADS AND IMPROVING PRODUCTIVITY.

THE MOTOR WORKS WITH THE CNC SYSTEM FOR ACCURATE BENDING AND FEEDING, DELIVERING PRECISE RESULTS WHILE REDUCING ENERGY USE AND LOWERING OPERATING COSTS.

## BENDING SYSTEM

DOUBLE BLADE ALTERNATE BENDING SYSTEM

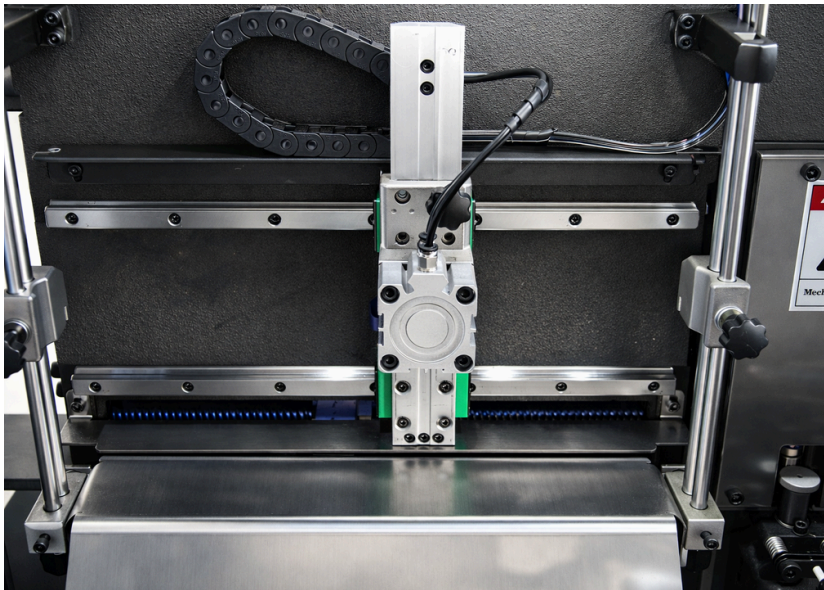
SUITABLE FOR STAINLESS STEEL, FLAT ALUMINUM, GALVANIZED STRIPS, AND IRON STRIPS.

SCRATCH-FREE AND MARK-FREE BENDING SURFACE, CAPABLE OF BENDING VERY SMALL ANGLES WITH HIGH PRECISION.

STABLE STRUCTURE WITH CONSISTENT BENDING PRESSURE, ENSURES PERFECT CURVES AND SHARP EDGES ON EVERY LETTER.



# PARTS



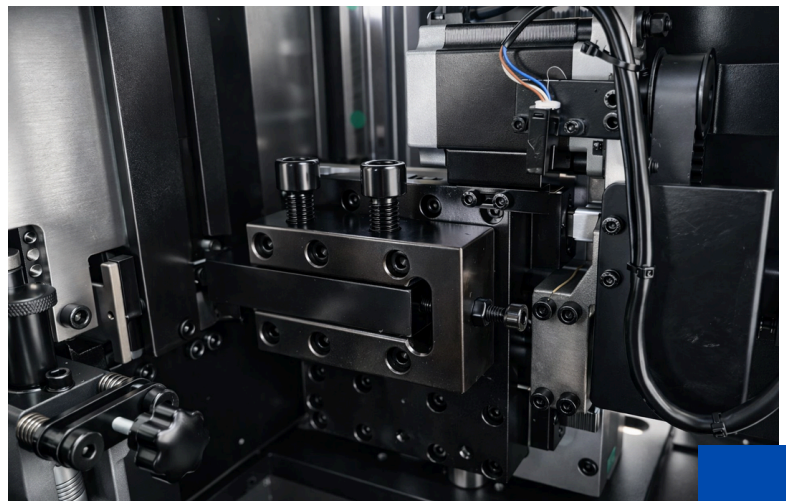
## FEEDING SYSTEM

CIRCULATION CLAMP FEEDING SYSTEM,ENSURES ACCURATE STRIP FEEDING WITH  $\pm 0.01$ MM TOLERANCE.

STABLE OPERATION WITHOUT SLIPPING OR DISTORTION. DESIGNED FOR LONG-TERM PERFORMANCE AND DURABILITY.

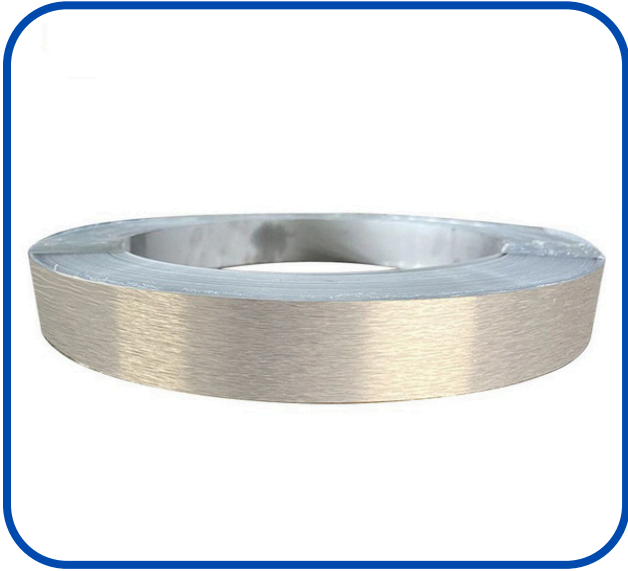
## CUTTING SYSTEM

STAINLESS STEEL CUTTING IMPORTED CARBIDE PLANER BLADE WITH AUTOMATIC TOOL ALIGNMENT, REINFORCED 2.5 MM LEAD SCREW, AND SERVO DRIVE FOR FAST, STABLE, AND PRECISE CUTTING.



# Technical Parameters

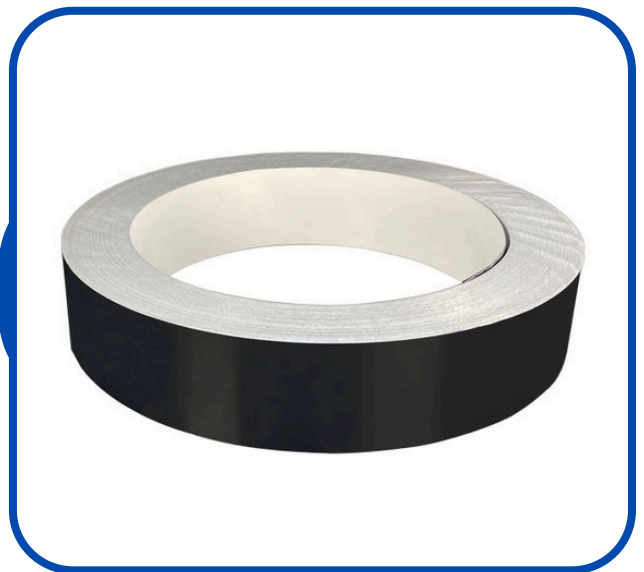
<b>Slotting System</b>	Planer knife slotting system
<b>Bending System</b>	Double blade alternate bending system
<b>Feeding System</b>	Circulation clamp feeding system
<b>Working Voltage</b>	Single Phase AC 220V,50/60Hz
<b>Cutting Depth Calibration</b>	Automatic by software
<b>Size Accuracy</b>	±0.1mm
<b>Material Height</b>	20~130mm
<b>Material Thickness</b>	0.3 ~1.2mm
<b>Minimum Bending Radius</b>	R≥6mm
<b>Input File Format</b>	DXF
<b>Assembled Dimensions</b>	2.55*0.85m*1.71m
<b>Packing Size</b>	160*84*170cm (2.3m <sup>3</sup> )
<b>Packing Weight</b>	400kg
<b>Applicable material</b>	Stainless steel, Flat aluminum, Galvanized strips, and Iron strips



## STAINLESS STEEL

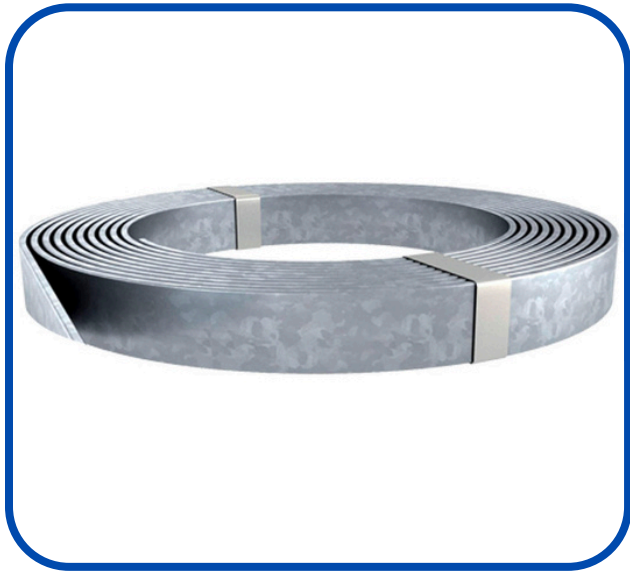
AVAILABLE PROCESSING SIZES: 2CM UP TO 13CM

# APPLICABLE MATERIAL



## FLAT ALUMINUM COILS

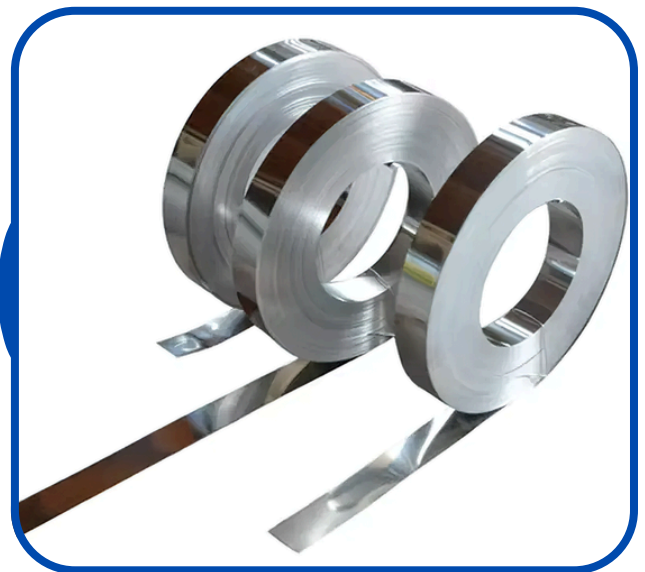
AVAILABLE PROCESSING SIZES: 2CM UP TO 13CM



## GALVANIZED STRIPS

AVAILABLE PROCESSING SIZES: 2CM UP TO 13CM

# APPLICABLE MATERIAL



## IRON STRIPS

AVAILABLE PROCESSING SIZES: 2CM UP TO 13CM

# ABOUT US

BUILD . TO LEAD .



Based in Weifang, Shandong, our modern manufacturing base covers over 12,000 m<sup>2</sup> and integrates research, development, production, and testing in one facility — ensuring stability, efficiency, and quality at every stage.

Hightech provides professional installation, training, and lifetime technical support. Our responsive service team and spare-parts centers ensure fast solutions and long-term reliability for every customer.



Equipped with advanced CNC machining centers, laser cutting systems, precision welding equipment, and intelligent assembly lines, Hightech continuously upgrades its technology to meet global industrial standards.

Driven by passion and professionalism, our international team of engineers, designers, and sales specialists works together to deliver innovative machines and trusted partnerships worldwide under the Hightech brand.






# CONTACT US



 USA, Hightech Industry INC USA

 Canada, Hightech Industry Canada


 United Kingdom, Hightech Signage Solutions LTD

 Mexico, Hightech Industry operated by Imprime iya

 Iran, Hightech Industry operated by Aluone

 Brazil, Hightech Industry operated by Banner Jet

 India, Mehta Hightech Industries L.L.P

 IRAQ, BAGHDAD, Hightech Industry operated by AL Sabagh

 Dubai, Hightech Blue LLC

 Indonesia, Hightech operated by PT Digital Prima Imaging



 NO. 6188 WEICHANG ROAD, WEICHENG DISTRICT, WEIFANG CITY, SHANDONG PROVINCE, CHINA

 [INFO@HTINDUSTRYCO.COM](mailto:INFO@HTINDUSTRYCO.COM)



[WWW.HTINDUSTRYCO.COM](http://WWW.HTINDUSTRYCO.COM)



+86 156 2166 0575 / +86 156 2166 0576