

PRODUCT

DATA SHEET



Bending
Cutting
Welding
Marking

2024-2025

HIGHTECH INDUSTRY GROUP

BUILD . TO LEAD .

ABM

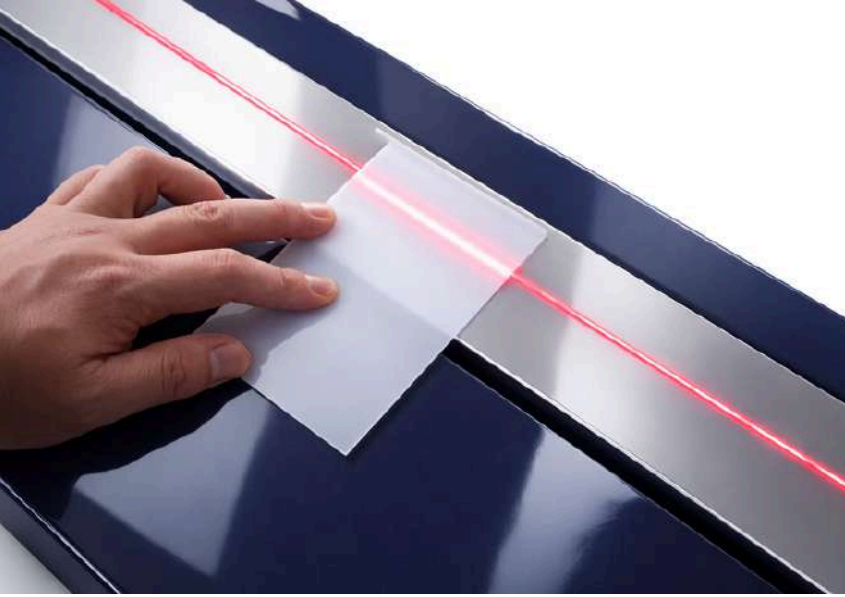
ACRYLIC BENDING MACHINE



Equipped with adjustable temperature control, infrared heating, and a circulating water cooling system, the ABM ensures fast, stable thermoforming and consistent results across different acrylic thicknesses.

The adjustable heating gap allows precise adaptation to various materials and sheet thicknesses, ensuring uniform heating and improved forming quality.

With adjustable angle (0–160°) and length (700/1300 mm) positioning components, the upgraded design supports standardized setup, higher repeatability, and efficient mass production.



HEATING TUBE

IT FEATURES FAST HEATING, STABLE TEMPERATURE PERFORMANCE, AND DURABLE CONSTRUCTION.

THE SIMPLE DESIGN ENSURES RELIABLE OPERATION, EASY REPLACEMENT, AND CONSISTENT HEATING EFFICIENCY DURING CONTINUOUS USE.

TEMPERATURE KNOB

A RESISTIVE TEMPERATURE CONTROL SWITCH WITH A ROTARY DIAL: A SIMPLE STRUCTURE, STABLE PERFORMANCE, AND EASY OPERATION.

SMALLER VALUES INDICATE HIGHER TEMPERATURES, AND "0" REPRESENTS THE MAXIMUM TEMPERATURE SETTING, ALLOWING BASIC AND DIRECT TEMPERATURE ADJUSTMENT.



PARTS



SPACING LEVER

IT FEATURES SIMPLE OPERATION, STABLE ADJUSTMENT, AND RELIABLE POSITIONING.

A SPACING ADJUSTMENT KNOB IS USED TO ADJUST THE DISTANCE BETWEEN HEATING ZONES, ALLOWING BASIC CONTROL OF THE HEATING AREA SPACING.



COOLING PUMP

THE CIRCULATING WATER PUMP ENSURES CONTINUOUS AND STABLE WATER FLOW, SUPPORTING EFFECTIVE HEAT DISSIPATION AND CONSISTENT COOLING PERFORMANCE.

ITS SIMPLE STRUCTURE ALLOWS RELIABLE OPERATION AND EASY INTEGRATION INTO COOLING SYSTEMS.

PARTS

THERMOMETER

THE DIGITAL THERMOMETER PROVIDES CLEAR AND ACCURATE TEMPERATURE READINGS FOR REAL-TIME MONITORING.

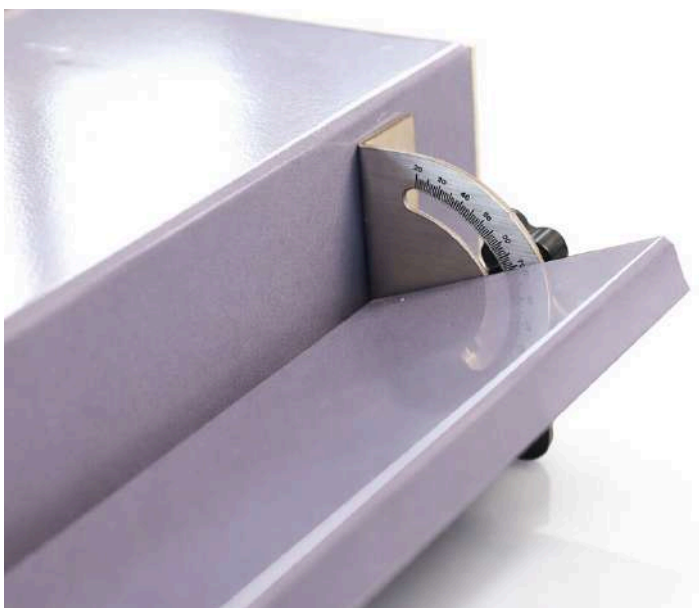
IT IS EASY TO USE, RESPONDS QUICKLY, AND HELPS MAINTAIN STABLE OPERATING TEMPERATURES DURING OPERATION.



ANGLE ADJUSTER

THE ANGLE ADJUSTER ALLOWS ADJUSTMENT FROM 20 TO 150 DEGREES, ENABLING BASIC CONTROL OF THE WORKING ANGLE.

IT FEATURES A SIMPLE STRUCTURE, CLEAR SCALE MARKING, AND STABLE POSITIONING.



Technical Parameters

Model	ABM700/1300
Working Principle	Thermoforming
Packing Size	122*40*19cm/182*40*19cm
Packing Weight	20KG/30KG
Working Voltage	Single Phase AC 100-240V
Applicable Thickness	1-10mm
Bending Width	≤700 mm / ≤1300 mm
Heating Slot Width	≤20mm
Temperature Range	0-600 °C
Machine Power	1500 / 2000 W
Water Pump Power	35 W
Working Length	40-330mm
Applicable material	Acrylic, PMMA, PC, ABS, PP, and other plastic sheets

ABOUT US

BUILD . TO LEAD .



Based in Weifang, Shandong, our modern manufacturing base covers over 12,000 m² and integrates research, development, production, and testing in one facility – ensuring stability, efficiency, and quality at every stage.

Hightech provides professional installation, training, and lifetime technical support. Our responsive service team and spare-parts centers ensure fast solutions and long-term reliability for every customer.



Equipped with advanced CNC machining centers, laser cutting systems, precision welding equipment, and intelligent assembly lines, Hightech continuously upgrades its technology to meet global industrial standards.



Driven by passion and professionalism, our international team of engineers, designers, and sales specialists works together to deliver innovative machines and trusted partnerships worldwide under the Hightech brand.





CONTACT US



 USA, Hightech Industry INC USA

 Canada, Hightech Industry Canada


 United Kingdom, Hightech Signage Solutions LTD

 Mexico, Hightech Industry operated by Imprime iya

 Iran, Hightech Industry operated by Aluone

 Brazil, Hightech Industry operated by Banner Jet

 India, Mehta Hightech Industries L.L.P

 IRAQ, BAGHDAD, Hightech Industry operated by AL Sabagh

 Dubai, Hightech Blue LLC

 Indonesia, Hightech operated by PT Digital Prima Imaging



 NO. 6188 WEICHANG ROAD, WEICHENG DISTRICT, WEIFANG CITY, SHANDONG PROVINCE, CHINA

 INFO@HTINDUSTRYCO.COM  WWW.HTINDUSTRYCO.COM  +86 156 2166 0575 / +86 156 2166 0576