

HTN1 Letter Bending Machine



Introduction



**HT1
BENDING MACHINE**

- ✓ FLAT ALUMINUM
- ✓ CHANNELUME
- ✓ SINGLE EDGE
- ✓ EXTRUSION PROFILE



3
3rd GENERATION OF TECHNOLOGY
NEW DEVELOPMENTS
UPGRADED SOFTWARE
MORE EFFICIENCY

HTN1 Bending Machine Suitable Materials: Letterume, Single Edge Aluminum Coils, Aluminum Extrusion profile and Flat Aluminum Coils.

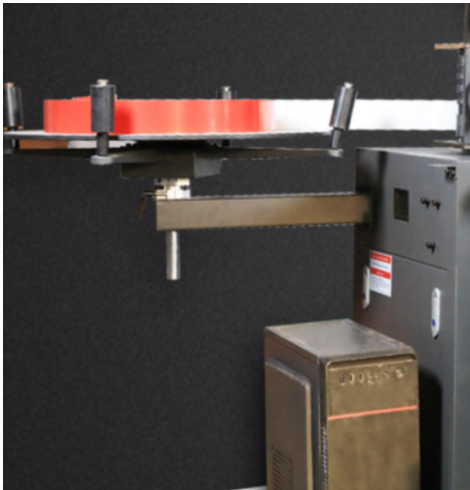
HTN1 Letter Bending Machine, manufactured by HIGHTECH and available exclusively from HIGHTECH Corp., is a line of automated channel letter bending machines known for their exceptional reliability and precision. The HTN1 Letter Bending Machine is equipped with the most advanced technology, making it the preferred choice for sign makers. It can complete the process of bending returns 15% to 25% faster than the closest competitors, and it also reduces hand finishing time by an additional 30% or more.

HTN1 Letter Bending Machine is a powerful channel letter bending machine available for use. It is suitable for working with materials such as Letterume, Single Edge Aluminum, Aluminum Extrusion profiles, and Flat Aluminum. The machine can handle materials with a height ranging from 10mm to 160mm and a thickness of 0.3mm to 1.2mm. It greatly simplifies the process of bending aluminum returns, making it quick and effortless.

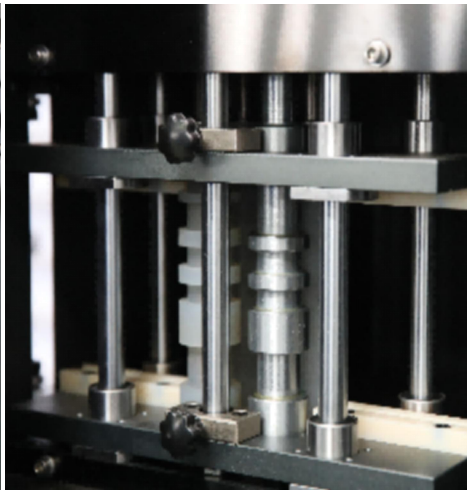
If a significant portion of your business involves fabricating traditional or reverse channel letters, the HTN1 Letter Bending Machine is your ideal choice. It has gained popularity worldwide. We are a global company that sells and exports products to over 100 countries worldwide. With our 10 years of experience in manufacturing and servicing these systems, along with our dedicated team of technicians, we have established the industry's most reliable service and support infrastructure.

Using Steps And Processing Features

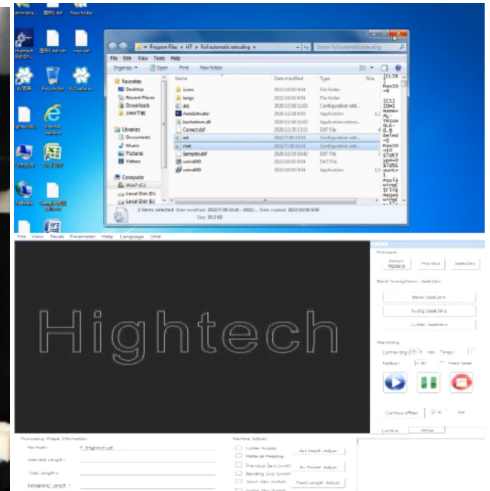
Step 1: Material placement



Step 2: Feeding Materials



Step 3: Debug Data



Feeding Platform:

- To begin, place the material on the platform
 - The height can be flexibly adjusted up and down
- The independent support design can withstand greater material weight.

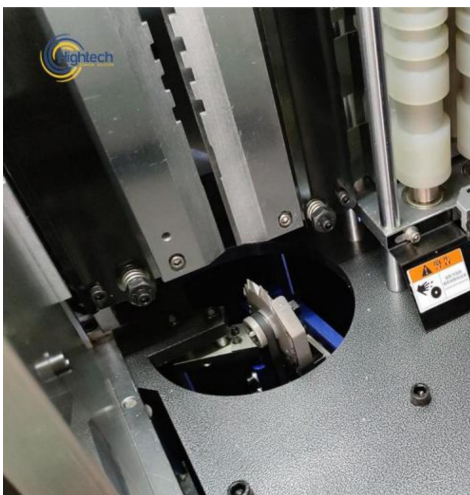
Rolling Feeding Method:

- Fixing material device, freely adjustable
 - Encoder counting of materials allows for more accurate feeding
 - Different grooves, feeding different types of materials
- Thicker rollers, larger radius, faster speed

Operating System:

- Independently developed by HIGHTECH
 - Cutting and bending commissioning
 - Easy to learn and operate
 - Accurate data and error-free cutting
- Debugging data can be saved independently, use it directly next time

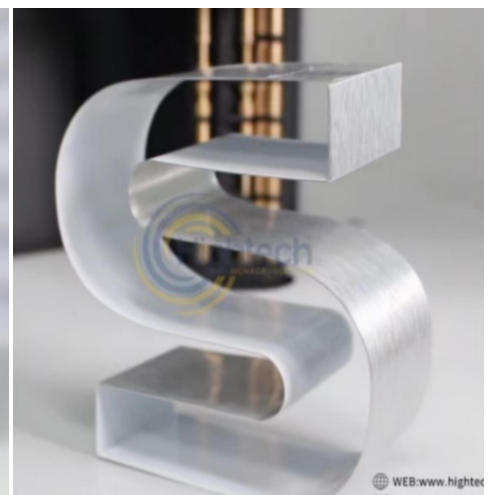
Step 4: Cutting Materials



Step 5: Bending Materials



Step 6: Letter Formation



Milling Cutter Slotting Method:

- High strength alloy milling cutter
 - Software automatically recognizes glyph angles, precise grooves and tracks
 - 360 degree rotation capability, front and rear cutting
- Imported from Germany, high speed/high precision/more durable

Double Alternate Grooved Cylinder:

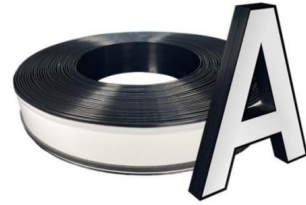
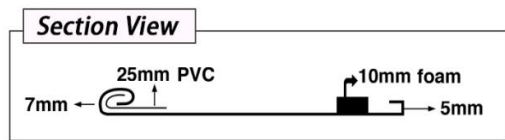
- Double-row copper shaft design, no damage to materials
 - Flexible edge materials and extruded profiles
 - Minimum bending radius 3mm
- Arc benders can be individually customized according to the material

HTN1 Letter Bending Machine:

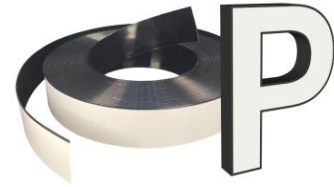
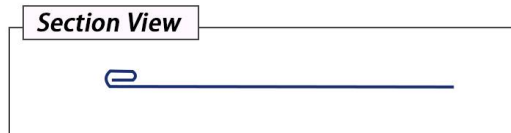
- It can make various types of aluminum letters.
- Flat aluminum returns
 - Channel letter with sponge and pvc
 - DF aluminum strips
 - Extrusion profile
 - Compared with manual production, it greatly improves work efficiency and promotes customer business growth.

Suitable Materials

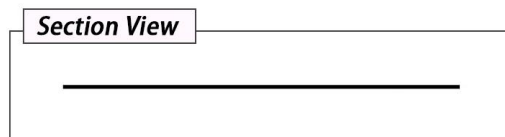
Material 1: Letterume



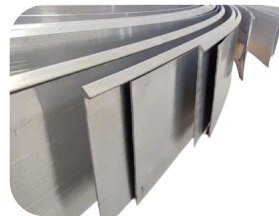
Material 2: Single Edge Aluminum



Material 3: Flat Aluminum



Material 4: Aluminum Extrusion profile



Applications and finished products:



Technical Parameters

Items	Description
Slotting System:	Milling cutter
Bending System:	Double alternate grooved cylinder
Feeding System:	Rolling feeding device
Cutting depth calibration:	Automatic by software
Suitable Material:	Letterume, Single Edge, Aluminum Extrusion profile and flat aluminum
Size Accuracy:	±0.1mm
Height of Material :	10~130 mm
Material Thickness:	0.3 ~1.2 mm
Minimum bending radius:	R10mm
Input File Format :	DXF/AI/PLT
Voltage:	AC220V//50Hz//2.4KW
Source:	0.6 m ³ /min
Size:	1380*760*1540mm
Weight:	350kg

Machines and accessories

HTN1 Letter bending machine, Computer, host, keyboard, dongle, toolbox, Cylindrical plug, 306 small U limit, Lift/lower lever limit, Knife grains, Cutter belt, Upper and lower belts

Accessories include with the	Standard non-fumigated export wooden crate
	

Service Promise:

We prioritize a customer-centered approach and strive to provide excellent pre-sales and after-sales services to ensure customer satisfaction. Our range of services includes:

Pre-sales Service:

- Our knowledgeable sales managers will offer detailed answers to your inquiries, helping you understand the machine's parameters and functions before signing a contract.
- We have a separate machine showroom and are ready for online demos and demonstrations at your convenient date and time

Shipment Service:

- We have a complete **Door-to-Door** route. We will first transport the machine to a local warehouse close to you, and then deliver it to your door from the warehouse. During this period we will keep in communication with you and confirm the location of the machine.
- Timeliness: Depending on the city, we will provide you with an approximate transportation time, and we will confirm the delivery time for you after the machine arrives at the warehouse. We will keep in touch with you during this period.
- **No need to do anything yourself, just wait for delivery.**

Training and Technical Services:

- We provide free online training or local technical services to customers.
- Training covers essential machine and software operations, basic maintenance and cleaning, as well as troubleshooting common software and hardware issues.

Warranty:

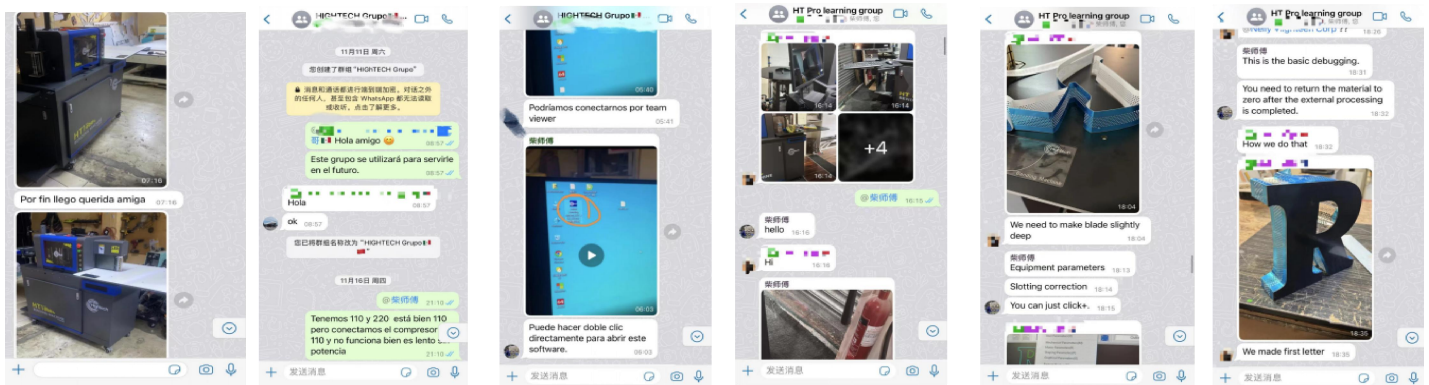
- The entire machine is covered by a one-year warranty.
- During the warranty period, we offer free replacement of spare parts, with the customer responsible for freight
- Lifetime software upgrades are provided to ensure continuous improvement.

Additional Services:

- We offer free lifetime technical consultation, addressing any questions or concerns you may have.
- Our dedicated support team responds to customer inquiries within 24 hours.
- After the warranty period, users can still access our lifetime service, with associated expenses being borne by the customer.

Policies and policies may vary depending on the country, please consult with your local agent or distributor.

Team after-sales service



Company Strength Display

Company and factory



Company and factory



Packaging and Loading



Packaging and Loading







Hightech Promise:

Hightech Company, by using the best domestic and overseas raw materials and utilizing of highest technology of domestic and foreign specialists has been always focusing on quality improvement.

Customer satisfaction is our eternal pursuit. We will spare no effort to provide the best products and services for customers all over the world.

Exhibitions And Customers

HIGHTECH Team at the exhibition site	Subject	HIGHTECH Team at the exhibition site
	◀APPP EXPO · SIGN CHINA▶	
	◀SIGN EXPO CANADA · SIGN CHINA▶	

There are more.....

Our Customers		Our Customers
	Hightech	
	Hightech	

Our Customers



Hightech

Our Customers



Hightech



There are more.....

Start Now:

Action, and from now on we will be connected, it greatly improves work efficiency and promotes customer business growth.

Enhance your signage with the HTN1 Channel Letter bender today!

